



Quality Probes that Provide
Economical Clinical Measures

Nicolet Obstetric Probes

2 MHz Obstetric Probes

The 2 MHz obstetric probe has a deep signal penetration and is best used to determine fetal viability in larger women and later in pregnancy. It will consistently pick up the fetal heartbeat at 12 weeks and is preferred for use during labor and delivery. The 2 MHz waterproof obstetric probe is well suited for underwater labor and delivery. When using the 2 MHz waterproof probe, the main unit of the Doppler remains outside of the water bath to provide clear, undistorted sound.



2 MHz Elite/CareDop probe	Catalog #N200
2 MHz waterproof Elite/CareDop probe	Catalog #NW20
Probe face diameter	18 x 25 mm
Overall dimensions	72 x 45 x 23 mm
2MHz waterproof probe cord length	152 cm (5')
Weight	40.37 grams

2 MHz Pocket-Dop II, IMEXDOP CT+, Pocket-Dop One, Pocket-Dop OB black style probe	Catalog #T200
2 MHz waterproof Pocket-Dop II, IMEXDOP CT+, Pocket-Dop One, Pocket-Dop OB black style probe	Catalog #WP20
Probe face diameter	37 mm
Overall dimensions	67 x 41 mm
2MHz waterproof probe cord length.....	152 cm (5')
Weight	39 grams



2 MHz FreeDop probe	Catalog #F200
Probe face diameter	37 mm
Overall dimensions	137 x 38 x 38 mm
Weight	143 grams

2 MHz Pocket-Dop 3 probe	Catalog #H200
Probe face diameter	17 mm
Overall dimensions	127 x 23 x 24 mm
Weight	35 grams

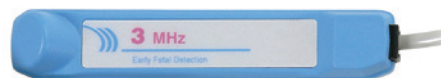
3 MHz Obstetric Probes

The 3 MHz obstetric probe has a shallow signal penetration and is more sensitive to early fetal heartbeats. It can pick up the fetal signals as early as 8 - 10 weeks. It is most commonly used to find fetal heartbeats and to monitor the fetus in the earlier stages of pregnancy.



3 MHz Elite/CareDop probe	Catalog #N300
Probe face diameter	18 x 25 mm
Overall dimensions	72 x 45 x 23 mm
Weight	40.37 grams

3 MHz Pocket-Dop II, IMEXDOP CT+, Pocket-Dop One, Pocket-Dop OB probe	Catalog #T300
Probe face diameter	19 mm
Overall dimensions	72 x 41 mm
Weight	34 grams



3 MHz FreeDop probe	Catalog #F300
Probe face diameter	19 mm
Overall dimensions	142 x 38 x 38 mm
Weight	138 grams

3 MHz Pocket-Dop 3 probe	Catalog #H300
Probe face diameter	17 mm
Overall dimensions	127 x 23 x 24 mm
Weight	35 grams

Nicolet Vascular Probes

5 MHz Vascular Probes

The 5 MHz vascular probe has a deeper penetration than the 8 MHz probe. It is most commonly used for post-surgical patients, locating hard-to-find pulses and monitoring deep veins and arteries in legs; and for ABI studies in larger patients.



5 MHz Elite, CareDop probe Catalog #N500
 Probe face diameter 18 x 25 mm
 Overall dimensions 72 x 45 x 23 mm
 Weight 40.37 grams



5 MHz FreeDop probe Catalog #F500
 Probe face diameter 12 mm
 Overall dimensions 165 x 38 x 38 mm
 Weight 141 grams



5 MHz Pocket-Dop II, IMEXDOP CT+,
 Pocket-Dop One probe Catalog #T500
 Probe face diameter 12 mm
 Overall dimensions 97 x 41 mm
 Weight 39 grams

8 MHz Vascular Probes

The 8 MHz vascular probe has a shallow signal penetration and is best used to assess superficial vessels. It is most commonly used for Ankle/Brachial Index (ABI) studies, finding pedal pulses, wound care applications and locating hard-to-find pulses in diabetic and trauma patients.



8 MHz Elite, CareDop probe Catalog #N800
 Probe face diameter 9 mm
 Overall dimensions 99 x 45 x 25 mm
 Weight 37 grams



8 MHz FreeDop probe Catalog #F800
 Probe face diameter 9 mm
 Overall dimensions 168 x 38 x 38 mm
 Weight 141 grams



8 MHz Pocket-Dop II, IMEXDOP CT+,
 Pocket-Dop One probe Catalog #T800
 Probe face diameter 9 mm
 Overall dimensions 104 x 41 mm
 Weight 39 grams

Nicolet VersaLab Probes

VersaLab LE/SE Probes



4 MHz Probe VersaLab LE/SE Catalog #BD40
 Probe Face Diameter 11 mm
 Overall Dimensions 110 mm
 Cord Length 170 cm (5'6")
 Weight (with cord) 48 grams



8 MHz Probe VersaLab LE/SE Catalog #BD80
 Probe Face Diameter 9 mm
 Overall Dimensions 115 mm
 Cord Length 170 cm (5'6")
 Weight (with cord) 46 grams

VersaLab APM/APM2 Probes



1.8 MHz VersaLab APM/APM2 Doppler Probe..... Catalog #TV180
 Probe face diameter 70 x 63 mm
 Cord Length 178 cm (5'8")
 Weight (with cord) 80 grams



2.0 MHz VersaLab APM2 Doppler Probe Catalog #TV200
 Probe face diameter 70 x 63 mm
 Cord Length 178 cm (5'8")
 Weight (with cord) 77 grams



Toco Probe VersaLab APM/APM2 Catalog #TV100
 Probe face diameter 70 x 63 mm
 Cord Length 178 cm (5'8")
 Weight (with cord) 69 grams



Supplies

Natus Neurology offers a full range of Nicolet brand obstetric and vascular Dopplers, accessories and supplies. Our dedicated customer service team based in Golden, Colorado has been providing exceptional support for over 40 years.

For more information, please contact your Nicolet Distributor or call:

US: 877-842-7970

International: 303-431-9400

Fax: 303-431-0429

*The images shown in this brochure do not represent actual probe size.



Natus Neurology Incorporated

3150 Pleasant View Rd
 Middleton, WI 53562 USA
 Tel: 1-800-356-0007
 1-608-829-8500
 Fax: 1-608-829-8709
www.natus.com

Natus – Nicolet brand products

720 Corporate Circle, Suite A
 Golden, CO 80401 USA
 Tel: 1-877-842-7970
 1-303-431-9400
 Fax: 1-303-431-0429
 1-800-939-4639

©2016 Natus Medical Incorporated. All Rights Reserved. All product names appearing on this document are trademarks or registered trademarks owned, licensed to, promoted or distributed by Natus Medical Incorporated, its subsidiaries or affiliates.